

WATERBEACH COMMUNITY ASSOCIATION

# Beach News

WATERBEACH - LANDBEACH - CHITTERING

*Winter 2024*  
*No.280*



★ WATERBEACH THEATRE COMPANY PRESENTS

★ BASED ON THE STORY BY

★ J.M. BARRIE

★ A PANTOMIME BY  
★ STEPHEN & RACHEL  
★ HUMPHREYS

★ CHOREOGRAPHER  
★ KATHERINE MALTBY

★ PETER  
★ PAN

DIRECTED BY  
EMMA  
BOLTON-LUCKIE

MUSICAL DIRECTOR  
ROISIN O'SHEA



23<sup>RD</sup>-25<sup>TH</sup> JANUARY 2025

WATERBEACH SCHOOL 7:30PM [2:30PM SAT MAT]

TICKETS £12, UNDER 16s £8

FAMILY TICKETS (2 ADULTS + 2 CHILDREN) £35

ADVANCE BOX OFFICE 01223 880023

OR BOOK ONLINE: [WWW.TICKETSOURCE.CO.UK/WCP](http://WWW.TICKETSOURCE.CO.UK/WCP)

[WWW.WTCONLINE.ORG.UK](http://WWW.WTCONLINE.ORG.UK)



WATERBEACH  
THEATRE  
COMPANY

*Love theatre,  
love Waterbeach Theatre Company*

**NODA**  
For every stage

# BEACH NEWS

Journal of Waterbeach Community Association  
[www.waterbeach.org](http://www.waterbeach.org)



'Beach News' is edited and distributed entirely by non-professional volunteers and is delivered free to residents of Waterbeach, Landbeach and Chittering four times a year.

The Association welcomes contributions on subjects of local interest but reserves the right to edit or omit articles without notice at their discretion.

Whilst every effort to ensure contents are correct on going to print the Association cannot accept responsibility for any omissions or errors.

Views expressed in articles are not necessarily those of the Association and we have no control over the nature, content and availability of any website or link referred to.

Articles for inclusion in 'Beach News' should be emailed to  
**[beachnews@waterbeach.org](mailto:beachnews@waterbeach.org)**

Advertisements published in 'Beach News' are subject to individual agreements between advertisers and readers and the Association cannot be held responsible for the quality of goods or services supplied.

Please refer any problems with advertisers to  
Alasdair Pentland 07751 786040

The nature of production makes publication dates uncertain but editions should appear as follows:

No.281 (Spring) 1<sup>st</sup> March – copy by 7<sup>th</sup> February 2025  
No.282 (Summer) 17<sup>th</sup> May – copy by 25<sup>th</sup> April 2025

*Whilst every effort will be made to adhere to this schedule unforeseen circumstances may delay or restrict publication or delivery and no responsibility can be accepted for late or non-appearance.*

## WHERE TO SEND YOUR ARTICLE

If you would like information on your group to be published in Beach News, or have some interesting news to share, write an article and send it along. Email it to **[beachnews@waterbeach.org](mailto:beachnews@waterbeach.org)** or send it to 5 Spurgeons Ave, Waterbeach, Cambridge CB25 9NU.

If you have posters detailing a one off local event that you would like put up in the Associations notice boards at Waterbeach Green and School entrances on High Street and Way Lane, please post three copies to 5 Spurgeons Avenue, Waterbeach, Cambridge CB25 9NU (Maximum size poster A4 in portrait format).

*Front cover – A frosty morning near Bottisham Lock, Waterbeach - Photo by Richard Youell*

## Contents

Community Association	1	Community Playgroup	16
Waterbeach Brass	3	Waterbeach Surgery News	16
Waterbeach Colts FC	4	Waterbeach United Charities	19
Waterbeach Turbary Charity	4	Memories	20
Girlguiding in Waterbeach	5	Cam Sailing Club	21
Waterbeach WI	6	Talking Together	21
Happy Folks Club	7	Gardening Club	22
Salvation Army	7	Waterbeach Fun Dog Show	23
WASPS	8	Cam Washes	24
Waterbeach Community Market	9	Foodbank	25
Waterbeach Scout Group	10	Arthur Rank Hospice Charity	26
Waterbeach Cricket Club	11	Tithe Barn	27
Library News	12	Fen Edge Twinning Association	28
Military Heritage Museum	13	Memories from Landbeach	29
Waterbeach Theatre Company	14	Concrete Rose Collective	30
District Councillor Update	15	Thermal Imaging for a Cosier Home	31

# Community Association



Hello everyone and welcome to the Winter 2024 issue of the Beach News. It might only be November as I write this but the weather seems to be doing its best to persuade us it's the middle of winter. Remember to wrap up warm, stay well and look after one another.

**Carols on the Green 2024** - This year's Carols on the Green celebration will be on Christmas Eve (24<sup>th</sup> December) – at 6:30pm, on Waterbeach Green around the Christmas tree. A great part of the Christmas tradition singing carols with accompaniment from volunteers from Waterbeach Brass and the

Salvation Army Band, please come along and join in. The carol sheet will be available on our website before the event

([www.waterbeach.org](http://www.waterbeach.org)). Please download and use an electronic copy, it's easier to see in the dark and saves paper. Leading the carols this



year will be Reverend Paul Butler from St John's and Corps Officer Angela Wilson from the Salvation Army.

The Christmas tree on the Green is provided by Waterbeach Community Association, thank you to all the volunteers who help put it up and decorate it and to Bannold's for their assistance. A big thank you to Gary Langley (Brian Langley and Son Ltd) for putting up, looking after and maintaining the lights around the Green and to the Parish Council for letting us plug them in.



*Christmas 2023*

During the Carols we will be holding a collection in aid of the Arthur Rank Hospice Charity. This worthy charity does lots to support people in Waterbeach and the wider Cambridgeshire region. In their own words “Supporting people in Cambridgeshire living with an advanced serious illness or other life-limiting condition and those who need end of life care”. For more information on their work please see the article later in the Beach News on page 26, or visit their website ([www.arhc.org.uk](http://www.arhc.org.uk)). Every year I am amazed at the kind and generous donations from our community to our Carols collection, thank you all for your continuous support.

**Feast 2024** - Believe it or not we're about six months away from next year's Waterbeach Village Feast. This year the Feast will be held on the first Saturday of June, Saturday the 7<sup>th</sup> June 2025. I can hear you are excited already and good news there are ways you can get involved and help us organise and run this village event. The first Feast planning meeting will be held in early January (date TBC – all Feast information will be released on the website [www.facebook.com/waterbeachfeast](http://www.facebook.com/waterbeachfeast)). The planning meetings are social events and brainstorming sessions to come up with new ideas. We introduced the music stage a couple of years ago and this will make a return next year, so we're thinking of something else to add to Feast Day. If you have any ideas for something new or you have something you would like to see in the Arena, on the music stage or any other entertainment please come along and let us know. It was really good to see people new to the area getting involved helping with the Feast this year, it would be great to see you again. The parade will of course be going ahead, it would be good to see some new groups join in, the parade is open to all groups of any size so please get in touch. The theme will be ‘Something beginning with the letter Q...’ this year – so maybe a little lateral thinking in coming up with ideas.

**Autumn Litter Pick** – Thank you to all the volunteers for organising the Autumn Litter Pick. Sadly, the weather was horrendous and the turnout was down on previous pickings. Thank you too to all the litter pickers who did turn out despite the weather. Every time we have a pick we get lots and lots of rubbish from the village. Please help us to keep the village tidy by thinking

before you drop litter, is it really fair to expect someone else to pick it up for you? Please come along to the next litter pick which will be early in the new year.

**Beach News** - Contributions to the Beach News are always welcome. Articles can be on local events, local clubs news or general interest. Pictures or photographs help to add interest to the magazine (be sure to check out the online version at [www.waterbeach.org](http://www.waterbeach.org) where the magazine can be viewed in full colour). If you happen to spot them on their rounds, please join me in saying thank you to the volunteers who deliver Beach News throughout the area.

Wishing you all a very merry and peaceful festive season.

[wcachair@waterbeach.org](mailto:wcachair@waterbeach.org). Tel: 07751 786040 *Alasdair Pentland*- WCA Chair

## Waterbeach Brass

As we approach Christmas, it has been a busy year for Waterbeach Brass Band. In September the band joined forces with the prestigious London Welsh Male Voice Choir for a special concert in Norwich Cathedral. This built upon the success of last year's outing to Ely Cathedral, raising money for the local rotary clubs while celebrating two wonderful genres of music. Last month a trip to the Wychavon Festival of Brass in Evesham gave the band a chance to show off a short programme of music on the theme of birds, taking the audience on a journey from the depths of the Amazon rainforest through to the Birdland jazz club in New York.

Brass bands are synonymous with the festive season, and the band have a busy run of carolling events coming up. We'll be heading out to village Christmas events at Longstanton and Great Shelford, as well as our usual spots in Milton and Fulbourn Tesco. Sticking a bit closer to home, there will be multiple opportunities to catch us around Waterbeach, including at the community markets, and at the Scout group's Santa's grotto, so do come and enjoy these lovely local events and get that Christmas feeling.

### **Christmas Carolling 2024 in and around Waterbeach**

*Waterbeach Scouts Santa Grotto - Sat 14<sup>th</sup> Dec. 1 - 2.30pm, Waterbeach Green*

*Waterbeach Community Market - Sun 15<sup>th</sup> Dec. Waterbeach Barracks*

*The Taps Pub - Friday 20<sup>th</sup> Dec. evening, Denny End Road, Waterbeach*

The band still rehearse on the Barracks complex, as we have done for the majority of the last 47 years. Rehearsing every week on a Monday evening in the Studio, we hope to continue playing and being a part of the wonderful Waterbeach community for many years to come. Head to our website [waterbeachbrass.org](http://waterbeachbrass.org) or find us on Facebook to keep up to date with our concerts!

# Waterbeach Colts FC



It's been a busy start to the season for our 18 teams from the under 6s all the way up to the adults. A big thank you to the groundsmen who have done a great job preparing the pitches so far this season. They have recently vertidraind it and spread 60 tonnes of sand to improve drainage over the coming wet months. As we move towards winter, we've managed to secure 4G training facilities away from the Rec. Any donations towards the hire are always appreciated.

For those attending our Saturday games please park considerately and if possible, leave space in the car park for visiting teams who don't know the other routes on to the Rec. We want to ensure our players, parents and local residents all enjoy match days.

Our first Xmas disco on 30<sup>th</sup> Nov sold out very quickly and if it's a success we'll be looking to have more spaces next year. Also, put 23<sup>rd</sup> – 25<sup>th</sup> May 2025 in your diary as we will again be holding our annual Music & Beer Festival to raise money for the club, helping to keep our fees low.

If you're passionate about the club or the community and have a few hours to spare each month, how about joining our committee? We're currently looking for a Communications officer to help with articles like this and posting on social media. Next summer we will have a vacancy for the vitally important role of Safeguarding, without which we would not be able to operate. It ensures the welfare of our teams by completing DBS checks, monitoring concerns and promoting best practice.

If you're interested in getting involved or have any questions please get in touch. [wcfc.chair@gmail.com](mailto:wcfc.chair@gmail.com)

*WCFC Committee*

## Waterbeach Turbary Charity (Reg No 201529)

### ***Applications For Heating Grants***

If you are resident in Waterbeach or Chittering and struggling to find the money for your heating bill, then you can apply for a grant from the Waterbeach Turbary Charity. Please ask for an application form from:

By email: [waterbeachunitedcharities@gmail.com](mailto:waterbeachunitedcharities@gmail.com)

- By post: Ms Shelley Mason, Secretary, Waterbeach Turbary Charity, c/o 7 Cambridge Road, Waterbeach CB25 9NR.
- Alternatively, ring 07761 155881 and leave a voicemail message with your email address (or postal address if you don't have access to emails).

Completed applications should be returned using the contact details above. Funds are limited so it may not be possible to accept all applications. The Charity is also unable to make ongoing commitments.

# Girlguiding in Waterbeach



Girlguiding continues to show girls a world of possibilities big and small – one where every girl can laugh, learn and have adventures.



Lizzy, the Brownies flag bearer

Here in Waterbeach, we've had an action-packed Autumn programme with varied activities, adventures away from the meeting place and service, with the laying of wreaths at the war memorial for the annual Act of Remembrance.

Rainbows, Brownies and Guides have enjoyed creating designs for the recent Landbeach Christmas Tree Festival. We look ahead to Christmas with excitement for further crafts, night hikes to view Christmas lights and carol singing to residents at Hatley Court.

**Rainbows** enjoyed a trip to Milton Country Park and had a fun evening playing at the new woodland play area, Wild Wood Park. They cooked delicious Apple Crumble and made Halloween Pizzas. 'Miss Sophie' taught the Rainbows Flamenco Dancing, complete with beautiful dresses and castanets to wear.

**1<sup>st</sup> Waterbeach Brownies** enjoyed a Wellbeing evening with mindfulness activities and created sensory jars and worry dolls. The Brownies completed cups of kindness to share with members of our community for World Kindness Day.

A recycling themed evening encouraged the Brownies to reduce, reuse and recycle plastics at home and they had great fun designing and creating their own recycled outfits!

The Brownies had adventures during a nature walk at dusk around the Waterbeach lake. They were fortunate to hear a number of bats feeding in the treeline with the aid of electronic bat detectors. These detectors convert the high-pitched frequency bats use for echolocation into sounds audible to humans.

**2<sup>nd</sup> Waterbeach Brownies** look forward to joining other Brownies at an exclusive Girlguiding members-only cinema visit for the screening of Moana 2.

**Waterbeach Guides** had a super evening with Beach Bellringers at All Saints, Landbeach and learnt about tower bells and practised on the training bell. They were shown different sequences of call change ringing and completed several craft activities relating to bells, including decorating bell-shaped biscuits!



In early October, a group of Guides joined 32<sup>nd</sup> Cambridge (Waterbeach) Scouts and Everest Explorer Scouts in Cambridge city centre to play the 'Monopoly Run' game. Over 25,000 steps were walked, many colleges visited and the Guides finished at the Waterbeach Scout Hut for a chippie tea and results. It was a fabulous team building event in the autumnal sunshine.

Lisa Broad from Yoga Bright visited the Guides and taught the Guides yoga poses, as part of their 'Be Well' theme award.



Cambridge Monopoly Run

Thank You to members of the local community who give up their time to share skills with Girlguiding. We wish you all a very Happy Christmas.

#VolunteerwithGirlGuiding: All of this is made possible by the incredible commitment of our volunteers who run meetings, as well as managing all the behind the scenes planning and admin. If you or your daughter would like to get involved in Guiding, please register online at [www.girlguiding.org.uk](http://www.girlguiding.org.uk) clicking on 'For Parents' tab or find our contact details on the community noticeboards within the village.

## Waterbeach WI



We have had an interesting and varied programme this Autumn. In September Jenny Gibbs gave a surprising and amusing talk 'A Turkish Shirley Valentine', which was about personal adventures in her life from her 50s. The Craft Evening in October was enjoyed by members and visitors trying new crafts, whilst Ian Harvey gave a moving talk in November 'The challenge of living in Sierra Leone'. The charity he supports practically and financially is making a huge difference to the health and education of young people he works with.

December 14<sup>th</sup> is our bring and share Christmas Party with a quiz and 3-D Pictionary as well as luscious food. We have had many new visitors recently. Please come along to any meeting on the second Thursday of every month at St. John's Church Room at 7.30pm. Here is the programme for the next three months.

January 9<sup>th</sup> - 'Sarah Carwin-a Suffragette'. A talk by Jerry Cooper about the President's 1<sup>st</sup> cousin 3 times removed.

February 13<sup>th</sup> - A Games Evening

March 13<sup>th</sup> - 'How to Overcome the Fear of Public Speaking'. A talk by Rebecca Pharo, who lives in Waterbeach.

*Viv Cooper* (President)

# Happy Folks Club

Here we are again heading towards the Christmas festivities. Where has that year gone! Still the Happy Folks Club is thriving and our monthly outings have once again been enjoyed by our members. The outings since the Autumn edition are outlined below.

September saw us visiting Sheringham for their Forties weekend where we were entertained by various street bands and dancing and dining at the many eateries they have to offer. It really is an enjoyable time specially with so many people dressing up in forties style clothing.

An outing for the shoppers was our next trip in October and the venue was Milton Keynes. If you are not keen on the shopping then there is always a watering hole or restaurant to while away the time.

Once again, I would like to reiterate that we would welcome any non-members to join us on these outings as the more people on board keeps the cost to a minimum. Just contact us on a Friday afternoon for any information or leave a message with the bar staff at the Beach Social Club and one of our committee will contact you.

When this issue is printed, we will have been to Skegness for a Tinsel & Turkey week which, hopefully, will have been enjoyed by all.

In December we will be going to the Thursford Show which is a yearly must for our members & non-members alike. This visit is always a popular one and on many occasions, we have a waiting list of hopefuls.

Also, in December we will have our Christmas party and a carols & cake afternoon. A full list of places to visit in 2025 is yet to be confirmed as we are gathering suggestions from members in order to obtain coach prices.

Apart from the monthly trips, we of course have our usual Friday afternoon meetings which are taken up with raffles, auctions and bingo, plus a chat with friends or indeed meet new friends. The membership is for the over 60's but the trips are for all ages. If you would like to come along to our meetings, please feel free to do so on a Friday from 1 pm at the Beach Social Club in Cambridge Road, Waterbeach.

That's all for now except to wish everyone a very merry Christmas and a happy and prosperous New Year.

*Terri Spencer - Chairperson*

## Salvation Army



We are aware that for a number of months, local residents have endured contractors who have been refurbishing 7 Station Road which is a building next door to The Salvation Army at Waterbeach. This has been converted into a new Divisional Headquarters (essentially, an administrative office) to support the work of The Salvation Army across the East of England. Thank you for your patience whilst this work was undertaken.

# WASPS



Since the last edition of Beach News, we have continued to be busy at WASPS. The children have been accessing varied activities such as hands on arts and crafts, baking, role play, small world play, playing an array of board games and making the most of our indoor and outdoor spaces.

The Breakfast Club can cater for up to 24 children in the mornings; sessions are generally planned to offer some gentle play opportunities such as colouring and drawing, board games, construction and role play/small world play. We offer breakfast alongside play, the children can choose from a variety of cereals, toast with various toppings and fruit. We also have drinks of water, squash, and milk readily available too.

The After School Club can cater for up to 40 children in the afternoons; sessions are planned based on the children's interests. There are many play opportunities available to the children, such as painting, den building, card games, Hama Beads, role play and outdoor play. Colouring is also still a firm favourite at the After School Club too! The children can choose activities freely from the resource cupboard if they would like something that isn't already out in the play space. We have various snacks available when the children arrive after school, they include wraps, pizza, croissants, bagels, beans on toast (available on a rota on different days) as an alternative we also offer toast with a variety of toppings. We have a variety of fruit available too, yogurt pots and drinks. We encourage the children to be as independent as possible and they can help prepare their snacks themselves, a member of the team is always on hand to supervise and offer help if needed.

We held our AGM at the end of October. Our Chairperson, Temoc, stood down at the meeting and will sadly leave the Committee as his children have moved up to secondary school. Temoc has been a member of the WASPS Management Committee for several years and has worked in various roles. Thank you Temoc, for all your hard work behind the scenes! We are pleased the rest of the committee members will continue their work on the committee, and we were able to recruit a new committee member too!

Holiday Club ran for two days over the October Half Term. The children enjoyed autumnal activities on day one, including creating leaf people puppets and hedgehogs, making bonfire night rockets and baking chocolate bonfire cupcakes. Day two was a Halloween themed fun day! Including making ghosts, having faces



painted, visiting the tattoo station, digging for bugs in ice, mummy wrapping, making mummy fruit kebabs and enjoying some Halloween music! The children also enjoyed playing pool and on the football table too. Our next Holiday Club day will be on Mon 6th January, bookings are now being taken. We are looking forward to having a WASPS stall at the PTA Winter Fair on 1st December, please come along and say hello!

We currently have a vacancy for Club Manager. If you know someone who may be interested in our manager position, please do encourage them to get in touch with us or visit our website for further details. At WASPS we are committed to safeguarding and promoting the welfare of children. All positions at WASPS are subject to references and enhanced DBS checks. WASPS has a Facebook page, @WaterbeachWASPS, please like our page to find out the latest news, updates and about our employment opportunities too.

Breakfast Club runs from 7:45 a.m. until the start of school and After School Club runs until 6 p.m. on all school days. Please enquire to find out availability and book a place.

Contact us: For more information, please visit our website:

[www.waterbeach-wasps.org.uk](http://www.waterbeach-wasps.org.uk). For enquiries please email us [wasps.waterbeach@outlook.com](mailto:wasps.waterbeach@outlook.com) or telephone us on 07858 975397 during opening hours. Outside of opening times, please leave a message and a member of the team will return your call when convenient.

## Waterbeach Community Market

This month sees our 5<sup>th</sup> anniversary. We started on the 15<sup>th</sup> of December 2019 at the Tillage Hall with 9 stalls and it was well received, then over the years we grew and grew. In 2022 Urban&Civic offered us the opportunity to expand the market to the Community Rooms plus an outside area and again this was well received. In 2024 we moved to our present location, the Terraces which are the old maintenance sheds. We have grown from 9 stalls in 2019 to over 60 stalls in 2024!

It is a showcase of local businesses and producers that bring their wares to our community. Fresh bread, cakes, meat, cheese, fish and much more for you to feast your eyes on. Waterbeach Community Market is a non-profit and we raise funds for our charities of the year, which has included Arthur Rank Hospice and NOCOA. This year it is Blue Smile, a children's charity based in Cambridgeshire, providing arts-based therapy.

Our market is every 3<sup>rd</sup> Sunday of the month based at the Terraces at the Old Waterbeach Barracks. Free entry, free parking, family and dog friendly. Look out for our yellow posters around the village.

Check out our Facebook page or email us [waterbeachcm@yahoo.com](mailto:waterbeachcm@yahoo.com)

# Waterbeach Scout Group

## **32nd Cambridge (Waterbeach) Scout Group**

In 2028 Waterbeach Scouts will be 100 years old.

On the 7th November 1928 the Reverend Bolton started a Scout troop to help the young boys in the village. Two students came from Ridley Hall in Cambridge to help. Fifteen boys came on the first night not knowing what Scouts was about. They were taught knots and talked about other skills they would like to learn.

They found somewhere to meet each week at 7.30pm with the Reverend as Scout Leader and the students as assistants. They had numerous people come and ask about skills they could learn. The following year a Scout Commissioner came and enrolled them and explained they had made a promise to be the very best Scouts they could be. Every now and then parents came to be entertained. From then on the Scouts thrived and joined in the Feast parade and Bob-a-Job.



Now nearly one hundred years later Scouts, Cubs, Beavers, and Explorers are still going but in a more modern way. We still go camping and learn skills for life.

Over the years our Scouts have gone on to be business owners, farmers, builders, and even a Hollywood director.

Looking to the future, we want our group to be the best and be able to learn modern skills like tech, etc. So, we are asking for volunteers, not necessarily every week, but maybe every fortnight or once a month. You might have an interesting skill that we can teach to the children - at the moment we teach cooking, fire lighting, first aid, map reading and climbing.

Any volunteers will be most welcome and there will always be Leaders to assist and support you. Meetings are held in our own building on the grounds of Waterbeach School.

We are grateful for any support at the Feast, at our bingo nights, and our Pop-Up Santa on the Green at Christmas.

### **Meeting times:**

Explorers (14½ to 18 years)	Wednesday nights	7pm - 9pm
Scouts (10 to 14½ years)	Tuesday nights	7pm - 9pm
Cubs (8 to 10 years)	Thursday nights	6.30pm - 8pm
Beavers (6 to 8 years)	Monday nights	5.45pm - 7pm

**Volunteer contacts:** Group Scout Volunteer - 07879 626682  
Scout Volunteer - 01223 441455 Explorer Volunteer - 07957 640544

**Upcoming events:** Pop-Up Santa 14<sup>th</sup> December on Waterbeach Green

# Waterbeach Cricket Club

And so we have come to the end of another cricket season. Because we only play weekday evenings it always finishes a little earlier due to fading light. Unfortunately, this season seemed even shorter than usual because rain prevented 3 games being played early on, and the opposition being unable to raise a side on the one occasion when there was a break in the weather. All of which was very frustrating.

In the end a total of only 6 games were played, three of which were league games. We won all by virtue of which we won the league though this may not be an accurate reflection of our success in relation to other teams, given that all 4 cancelled games were league fixtures. We also won the friendly A10 derby match against Milton.

When the weather got better the performances on the field matched its improvement. Performances were good, with match scores being higher than might have been expected from experience in previous seasons, this being the case for both ourselves and the opposition. Waterbeach scored over 100 – all innings this season with 3 scores over 150. This led to some close games, two of which were won by 16 runs and 9 runs respectively. We won slightly more convincingly on the two occasions – both by 7 wickets - when we batted second.

Much of the credit for this must go to the Parish Council, particularly Robert and Steve, for keeping the pitch in good order with the wicket playing really well and providing a reliable bounce which gave a good balance between bat and ball. So, our thanks to them.

We retained most players from previous seasons. Although they play for different clubs at weekends, they all seem to enjoy the Waterbeach camaraderie. The same goes for the one or two new players who were accepted into the fold this year and who, hopefully, enjoyed their first season with us to the extent that they will return in 2025.

All matches were played in a good spirit, though everybody played to win. This approach was fostered by captain Rakesh. His enthusiastic encouragement in the field, and sometimes dropping himself down the batting order meant there was a balance of competitiveness versus giving everyone a game (not always easy when you are playing to win), whatever their capabilities. Rakesh was less of a shrinking violet in the field. He was the leading wicket taker with 9 (average 10), and the leading catcher with 4. Will Charlton scored most runs, 110 at average 37, with Sandesh scoring 100 runs at average 36.

The best league win was probably against Stapleford by 27 runs, but this paled into insignificance compared to the 16 run win against Milton in the

A10 derby. Overall it was a good season for us, except for the few cancelled games due to rain.

Off the field there has been a change in the venue for post match entertainment. This is no disrespect to our friends at The Sun, who have looked after us for many years and our thanks and best wishes go to them, but 2 club members have taken over the running of The Brewery Tap, affectionately known as The Taps, where there will be a warm cricket welcome for anybody stepping over its threshold.

Here's wishing everyone a happy close season whatever your winter sporting interest, and we look forward to seeing you again on summer evenings in 2025.

*Steve Cardy* - Hon. Treasurer

## Library News



### ***Waterbeach Independent Lending Library***

The Library has had another good and busy year – in the past 12 months, over 14,000 books were borrowed by our 1300 members. Our collections are strong in children's books, young adult and adult fiction and crime, but you may not know we also stock non-fiction for children and adults, phonics and early reading scheme books, a unique local studies section, books supporting mental health challenges and large-print books.

Your library card also gives you access to the county libraries' collections of eBooks, eAudiobooks, eMagazines, eComics and eNewspapers and to online reference sources such as dictionaries and family history databases. Visit [www.cambridgeshire.gov.uk/libraries](http://www.cambridgeshire.gov.uk/libraries) to get started.

The Library apologises for the failure of the gas heating during the early autumn which made visiting us less comfortable. We hope this situation will be resolved as soon as possible.

We continue to discuss the future of the ageing library building with Waterbeach Parish Council and the management of the school, and will work to secure a replacement building on the current site.

Our opening times are as follows:

Monday 14:45–17:00

Wednesday 14:45–17:00 and 18:00–20:00

Friday 14:00–17:00

Saturday 10:00–12:00

The Library will be open on Monday 23 December and then close for Christmas, reopening on Friday 3 January. The volunteers would like to thank all our readers for their support this past year and wish you a very happy festive season.

# Military Heritage Museum



The museum tells the story of the former airfield from 1938 when Winfold Farm land was bought for a war time airfield and then the RAF arrived in 1941. The Royal Engineers took over in 1966 until they left Waterbeach in 2012. The site is now being developed as Waterbeach (New Town).

## ***WMHM Open on the following dates***

December Sunday 15<sup>th</sup> with Waterbeach Community Market 10am- 3pm

January Sunday 19<sup>th</sup> with Waterbeach Community Market 10am- 3pm

March Sunday 2<sup>nd</sup> & Wednesday 5<sup>th</sup> 10am - 4pm

Sunday 16<sup>th</sup> with Waterbeach Community Market 10am- 3pm

***'The Return'*** - By the time Beach News comes out the carving by Gordon

Hayes will have been unveiled and on show. It is a wonderful carving of a Waterbeach Lancaster crew leaving their aircraft, taken from an Express Newspaper photographers photograph 80 years ago. The 4 x 3-foot carving in limestone weight about 200 kg and took a bit of getting up and fixing to the wall! The Museum are looking to raise £13K to retain the carving so have started fund raising. Two graphic boards are being placed one each side of the carving to explain why it is there and important to the history of Waterbeach.



***Beach Social Club*** - The Museum was one of two charities the Beach Social Club raised funds for over 2024. A donation from their 2024 fund raising of two thousand pounds each has been given to Waterbeach Military Heritage Museum and Camsight. Many thanks Beach Social Club for their tremendous effort on behalf both the charities.

***Displays*** - Since the last Beach News, the museum trustees have been working hard, mostly on a Monday morning, to set up the new display cabinets. Some are still temporary and will be changed as moving things around progresses. There has been an adjustment in the layout and time line in telling the story of RAF Waterbeach and the Royal Engineers to make more sense of what came and when, and how the progression of the site occurred. There were quite a few RAF squadrons over the years and we are trying to say something about each one. We have most information on the Conversion Units which provided training for air crews to change from one type of aircraft to another.



514 Squadron of course has the biggest area in the RAF Section of the museum. A new graphics board is replacing a lot of photos and paper descriptions which cover much of a wall. We are using swing wall hanging display folders for many of the paper items. Artefacts in store should be on display soon as we continue to introduce new items of interest. We have some artefacts in store for the space in the Engineers section but we could do with more, so if former Engineers have anything squirrelled away and looking for a new home, the Museum would be glad to help.

We have yet to erect the Lancaster Bomber models in flight over head, but watch this space!

Website: [www.waterbeachmilitarymuseum.org.uk](http://www.waterbeachmilitarymuseum.org.uk) Follow us on Facebook  
We look forward to you visiting us.

*Adrian Wright* - WMHM Chairman

# Waterbeach Theatre Company

Our day to Royal Ascot has passed the finish post and if you joined us for Ladies' Day, we hope you had an enjoyable evening. We are not resting on our laurels though as we are straight into rehearsals for our annual pantomime which is to be *Peter Pan - a Pantomime* by Stephen & Rachel Humphreys. It is the classic JM Barrie tale given a panto twist, in which Smee becomes Mrs Smee Captain Hook's Nanny, but the Lost Boys, Tinkerbell, Wendy, John, Michael and Peter are all as they ever were. Directed by Emma Bolton-Luckie, Musical Director Roisin O'Shea, Choreographer Katherine Maltby. Note that as with all adaptations of Peter Pan, half the author's royalties are paid to Great Ormond Street Hospital.



Tickets go on sale online on 1 December [www.ticketsource.co.uk/wcp](http://www.ticketsource.co.uk/wcp)

In May 2025 we present Alan Ayckbourn's famous farce *How the Other Half Loves*. There are three couples in this play with two living rooms shown in the single set. Both share a common dining room which takes on a character of its own as it serves two dinners simultaneously on two different nights: but that complication only adds to the fun of this famous farce directed by Vicki Hingley. Then in November 2025 Martin George directs *Pack of Lies* by Hugh Whitemore (based on true events). The Jacksons are a nice couple. Their best friends are their Canadian neighbours, the Krogers. A detective from Scotland Yard asks to use their house as an observation station to try and foil a Soviet spy ring operating in the area. The Jacksons become more and more put out as Scotland Yard's demands increase. Especially when the detective reveals that the spies are the Krogers and he asks them to help set a trap. Should they betray their friends?

Watch the WTC website and our Facebook page for more details as they become available. [www.wtconline.org.uk](http://www.wtconline.org.uk) or search @waterbeachdrama

# District Councillor Update

As residents of Waterbeach you are likely aware of the many infrastructure schemes that are planned for our village and emerging town. These include the Waterbeach to Cambridge busway, the station relocation and the Waterbeach Greenway. We are generally supportive of these schemes because it is important that the town and village will be provided with options that enable us to get to work, school, college, hospital and the myriad of other places we wish to travel. It's also important that we can choose how we travel. Most of the investment will be made in public and active travel to reduce the pressure on our already congested roads. These modes also benefit the young and old and anyone else that cannot drive or afford a car. Many of these schemes are being developed by the Greater Cambridgeshire Partnership (GCP) a collaboration of City Council, South Cambridgeshire District Council and County Council.

We understand the concern about the station relocation. However, as the new town grows eventually to 11,000 homes (1.5 times the population of Ely), it doesn't make sense for a hugely increased number of travellers to come down Station Road to the existing station.

However, the devil is often in the detail of these schemes. As your councillors we are working hard to ensure that they are as good as they possibly can be. For instance, we want to see facilities at the relocated station such as toilets and proper shelter from the elements. The current plans are not adequate. We have been calling for better facilities at council meetings and GCP meetings.

For the Greenway we have been asking for residents' concerns about the plans for sharing of paths between cyclists and pedestrians through Milton to be listened to. We have also been calling for this Greenway to be progressed more quickly. Now that Milton Rd is finished and Cowley Rd is being improved for pedestrians and cyclists a Greenway connecting to them will complete a much better experience for cycling into Cambridge from Waterbeach.

For the busway we have been raising concerns about adequate drainage to prevent flooding. We also want to ensure that bus services must run through the village when the busway is operational.

As the detail of these schemes is worked up we shall continue to scrutinise all of these schemes to see whether they are what is needed for both the village and town.

Your Councillors are here to help you. Please do feel free to contact us with comments, questions, problems or complaints. We hope we can help but if we can't we are likely to know someone who can! Our contacts details are:

Paul Bearpark	<a href="mailto:cllr.bearpark@scambs.gov.uk">cllr.bearpark@scambs.gov.uk</a>	07824 709153
Anna Bradnam	<a href="mailto:cllr.bradnam@scambs.gov.uk">cllr.bradnam@scambs.gov.uk</a>	07950 241845
Judith Rippeth	<a href="mailto:cllr.rippeth@scambs.gov.uk">cllr.rippeth@scambs.gov.uk</a>	07956 528223

# Community Playgroup



The start of the new school year is always an exciting time for us at Community playgroup as we welcome back our existing families and children, and those joining us for the very first time.

This year we also welcome new staff members to the team, Sarah Heil joined us a deputy manager and Rebecca Lewis and Elizabeth O'Rourke as early years practitioners.

We spent the first few weeks getting to know each other and exploring the 'All about me' theme, from who makes up our families through to where we live and how we can be active and helpful members of the community. As the weather began to change, we looked at all the wonderful autumnal bounty from acorns and conkers to amazing coloured leaves and, of course explored Harvest. We have also spent time looking at important dates and celebrations and as I write this the children are making beautiful poppies as we join others in the act of remembrance.



At Community Playgroup we aim to give our children as many meaningful learning experiences as we can with exciting motivating activities combined with library visits every 3 weeks, weekly cookery sessions, gym, music and movement sessions, STEM activities and as always lots of messy play.

Waterbeach Community Playgroup provides a fun, safe environment with an emphasis on learning through play. You can see what we get up to by checking out the gallery on our website

[www.waterbeachcommunityplaygroup.org.uk](http://www.waterbeachcommunityplaygroup.org.uk) Children are welcomed from their second birthday and can attend sessions between 9am and 3pm, Monday to Friday, term time only. We offer 15 and 30hrs funded places to qualifying families as well as paid sessions. We currently have some availability for the coming year, but places are filling fast. You can get in touch for more information either by email: [info@waterbeachplaygroup.org.uk](mailto:info@waterbeachplaygroup.org.uk), or alternatively by phone on 01223 440769

## Waterbeach Surgery News

I would like to wish all our patients a very Merry Christmas and Happy New Year and thank all of you for your support and good wishes.

**Exciting Changes Ahead!** - As patients you will appreciate that, currently, providing GP services has many challenges across the country. Sadly we have seen GP surgeries having to close their doors permanently as they are

no longer able to staff them sufficiently. Surgeries have had to learn to work differently to maintain compliance with GP National Contracts whilst actively recruiting.

Waterbeach & Cottenham Surgeries are both under the management of Malling Health Ltd and have been working alongside each other for the last 12 months. We are now taking the logical step to merge the two surgeries formally.

***What does this mean to you as a patient?*** - Patients will not notice any real changes apart from being under the name of Waterbeach & Cottenham Surgeries. Cottenham will be a branch surgery of Waterbeach.

- You will still come to Waterbeach for your appointments
- You will still see the same GPs and nurses we have now
- Your prescription process will not change

Many of the team, including GPs, already work across both sites, but you may see the occasional new face covering holidays or periods of sickness or hear a new voice on the telephone.

Going forwards we may be able to offer patients appointments at Cottenham Surgery if available, but this will not be straight away.

We realise that change is difficult for everyone, but we thank you for your continued support as we strive to offer the best service we can during challenging times. Please bear with us while we correct any difficulties.

If you are eligible for an NHS flu vaccination then you will be invited to book your appointment in the next month and we will continue to invite people through December and January. Please let us know if you would like it done.

From 1 September 2024, those who turn 75 and those age 75 to 79 became eligible for a free vaccine to protect them from respiratory syncytial virus (RSV). RSV is an infectious disease of the airways and lungs. RSV infection often causes symptoms similar to a cold, including:

- cough
- sore throat
- sneezing
- a runny or blocked nose

It can also make you become wheezy or short of breath and lead to pneumonia and other life-threatening conditions. There is no specific treatment, and most infections will get better by themselves. Every year thousands of older adults need hospital care for RSV, and some of them will die. RSV can be more severe in people with medical conditions such as heart or lung disease or a weakened immune system.

RSV infection is common in young children but is most serious for small babies and for older people. You will be sent an invitation if you are eligible for this vaccine.

The Surgery will not be administering covid vaccinations during the winter of

this year.

Please be aware of the conditions that we can refer you for at the Waterbeach pharmacy. This is now part of the new NHS initiative of Pharmacy First and will be accessed via a referral by the team at the surgery.

These conditions are

1. Sore throat – 5+ years and not pregnant.
2. Earache – Children aged 1-17, not recurrent.
3. Sinusitis – over 12 years, not more than 12 weeks duration, immunosuppressed or pregnant.
4. Impetigo – not recurrent, over 1 year and not bullous.
5. Shingles – not pregnant, over 18 years.
6. Infected Insect bites – over one year old.
7. Uncomplicated urinary tract infections in women – 16-64, not recurrent, not pregnant, no catheter.

We have a new 2 additions to the team - Dr Rosie Gordon, a salaried GP, who joins us in Jan 2025 and Raheal Alia, an Advanced Nurse Practitioner, who started in October.

We have had such positive feedback regarding the new phone system. We now offer call back, so the system will ask you if you would like a call back and this will keep your position in the queue. Another feature we have introduced is a message that informs patients when the surgery has no on-the-day appointments left. This has seen a reduction in frustration.

When you have a GP telephone appointment, please ensure that you have your mobile with you at all times and that it is not on silent. Those without a mobile will need to be close to their landline. The GP or ANP (Advanced Nurse Practitioner) will ring at least twice. Some patients are phoning repeatedly to check they've not missed their call. This is putting more pressure on staff.

We no longer prescribe medications that can be purchased over the counter. This is because of government policy to reduce the amount of money the NHS spends on prescriptions for treating minor conditions. If you are wanting help or advice about this please ask. Please be aware that we do not take prescriptions over the phone; if you require a repeat prescription you will need to put this in writing and place in the letterbox at the entrance of the surgery or take it into reception. Please allow 5 working days for your prescription to be processed. A lot of our patients use the NHS app online to request repeat prescriptions and it reduces workload for the prescription clerks. You can find the App on the App store or for Android on the Play Store. The practice currently has a 64% take up of patients using on-line access.

Like all GP surgeries there is a big issue with patients missing appointments. These DNAs are costing a huge amount of time and money. If you cannot

attend your appointment, for whatever reason, please contact the surgery to inform us so we can then accommodate other patients. We recognise that sometimes it is unavoidable that an appointment may be missed. You will be phoned or sent a letter to follow this up. If you do not attend on three occasions you may be asked to register at another practice. The new messaging should help this not to be needed. There has been some talk by politicians of fining patients, who miss appointments. We can stop the need for this if patients are more considerate.

I constantly get challenged why are there no appointments. Last month was no exception as there was a high number of calls from patients. The frustration for me is that if the 210 patients who didn't turn up had contacted the surgery to advise us of not attending their appointment, then we would have had more appointments for those, who needed them. This number covers now both Waterbeach & Cottenham. If the reception advises you there are no appointments, then they are telling you the truth.

Just a gentle reminder that the practice operates a zero-tolerance policy on aggressive and abusive behaviour. If you are rude, aggressive or abusive to any member of the team you will be warned via letter of your unacceptable behaviour. If this happens again then I will have no choice but to remove you from the Practice list and you will need to register at another practice. We can serve you best when there is good communication.

The surgery team are very positive about our ability to take care of our Waterbeach community. If you have any concerns about your care please contact me at the surgery straight away by phone or by the feedback link on the Waterbeach surgery website. *Bruce Abel* - Practice Manager

## Waterbeach United Charities (Reg No 201528)

Waterbeach United Charities provides financial support or pays for services that help to alleviate the situation for individuals residing in Waterbeach Parish who are "in need or distress".

**Electric Wheelchairs** - We have a number of electric wheelchairs for those in need. If you would like to be considered please ask for an application form.

**Distress Grants** - The Trustees would like to hear from individuals who may be *IN NEED OR DISTRESS*. If you think we could help, and to find out whether you are eligible for assistance, whether it be loaning equipment to you, or providing financial support, please ask for an application form.

By email: [waterbeachunitedcharities@gmail.com](mailto:waterbeachunitedcharities@gmail.com)

By post: Waterbeach United Charities, c/o 7 Cambridge Road,  
Waterbeach CB25 9NJ

All personal applications are confidential.

# Memories

Reading Rosemary Thomson's story in the autumn edition of Beach News about the Italian Prisoner of War, brought back memories for me as I also remember three Italians coming to work for my uncle, Len Bavester, at St. Andrew's Hill, Waterbeach.

They lived in the little building adjoining 5 St. Andrew's Hill and went to work on the land every day until the war ended.

They were always very friendly towards us children and my cousin Olive and I used to go in often and see them. Once they made us rings out of some sort of metal, sadly these must have got lost as neither of us have them now.

I remember that inside they had a ladder to climb up into the roof where they slept and there was a big black metal stove which kept the place lovely and warm, I think they used it to cook on as well.

On Sundays all the POW used to congregate outside as this was as far as they were allowed to travel. I remember their names, Alsemo, Lebro and John, which was probably Johan.

They must have spent a number of years in this accommodation as I can vaguely recall my aunt saying they were going back to Italy as the war had ended.

When the building became empty Jack Pascal approached my uncle and asked if he could rent it to open it up as a Shoe Menders. I know he rented it for a good few years until he retired and then Mick Palmer took it over and carried on mending shoes there for several more years.

*Jenny Cross*

Have you lived in the village all your life and have memories of early school days, special events in the village over the years, buildings that have since disappeared and replaced with others, memories of village characters, in fact anything interesting.

The length of the article is not important, it might be several pages or just a couple of paragraphs, if it is an interesting memory or story, please send it in.

If you know someone without computer access that you know would like to contribute, perhaps you could volunteer to send the article in for them, they can deliver it as a hand written article if they do not have a computer, we can do the rest.

Do not worry if you think the layout or grammar does not look very good, it is the content that matters, contributions can be fully edited for spelling, grammar and layout.

You can email your item to [beachnews@waterbeach.org](mailto:beachnews@waterbeach.org) or hand-written items can be sent to 5 Spurgeons Avenue, Waterbeach, CB25 9NU.



# Cam Sailing Club

The sailing club has settled down now after all the celebrations held during the summer to mark the club's 125th Anniversary. The regular club racing has been well attended on Sundays, with dinghies racing in the morning, half-deckers holding their race early afternoon and the sailing cruisers starting later in the day. The weather has been challenging at times but it is unusual for a scheduled race not to go ahead. The wooden dinghies are now in the sheds, the larger keel boats have been craned out of the river and are now securely covered against the winter weather. The annual Prize Giving and lunch was held in the clubhouse in early November and the remaining race of the season, the Frostbite Spoon, is held on Boxing Day. Quietness resumes; the swan family with their fast-maturing cygnets is still spending time on and around the club slipway and the little-owl family have successfully raised another brood on the club grounds. Dab chicks, or little grebes, arrived in October and appear to be the first winter visitors on this stretch of the River Cam. If you are interested in joining the Cam Sailing Club please visit the website:



*Half Deckers*

[www.camsailingclub.org.uk](http://www.camsailingclub.org.uk) or email: [secretary@camsailingclub.org.uk](mailto:secretary@camsailingclub.org.uk)

## Talking Together

**Talking Together** offers older adults opportunities to share ideas and experiences in guided discussions from the comfort of their homes. Over the course of six weeks, participants are connected to a conference call from their landline or mobile phone for weekly forty-five minute sessions with other participants and discussion leaders. Materials are provided to add to the discussions. There is no fee. Registration is required and limited to ten people per group, to encourage robust conversations.

To date, groups have been facilitated by skilled discussion leaders from museums (including the Fitzwilliam, Kettle's Yard, the Museum of Cambridge, the Whipple Museum, and Downing College's Heong Gallery); as well as the National Trust sites, science laboratories at the University of Cambridge, members of the health and arts communities, historian and anthropologists.



For those with computer skills, a second tier offers one-off participatory Zoom sessions, also facilitated by skilled discussion leaders. Members receive subject-appropriate supplies prior to each session to foster a hands-on experience. Closed captioning encourages those with hearing limitations to attend. A maximum of twelve people participates in each of these groups. Talking Together is affiliated with the registered charity COPE (Cambridgeshire Older People's Enterprise) a free membership organisation. In addition to Talking Together, the continuum of programmes and services include: information and advocacy, social groups, outings, holiday lunches and a bi-monthly newsletter that can be received by email or post.

For further information, please telephone COPE at 011 441 223 364303 or email: [COPEtalkingtogether@hotmail.com](mailto:COPEtalkingtogether@hotmail.com)

## Gardening Club

The Club's AGM was held in October and a new committee was elected for 2024-25. Membership fees remain at £15 per year plus £2 per meeting attended, which is excellent value given the discounts available at Oakington Garden Centre and King's Seeds and the high-quality speakers who have agreed to visit us this year. Visitors are welcome to attend up to three talks per year upon payment of £5 per visit.

Following the AGM, David Craig, who is also the Club's Treasurer, gave a short, fascinating talk about Everglades House and Gardens in Leura, New South Wales. He used his own photographs to demonstrate the spectacular gardens, Art-Deco house and views of the World Heritage listed Blue Mountains. He told us that, should we be in the area, National Trust members will qualify for free admission!

November saw a return visit to the Club from Kerry Barehead. Previously she has spoken about roses and she hosted us on a summer visit to the famous Rochford's Rose Trials in Hertfordshire last year. This time, appropriately for November, she gave an illustrated talk on 'Plants for Winter Interest' and gave us lots of ideas for making our gardens more visually attractive.

We have no December meeting but we are already looking forward to our New Year Social in January. This is always a really popular event and a good opportunity for us to spend time socialising with friends. Our February meeting, on Thursday 20<sup>th</sup>, will feature Hawk Honey talking about 'Forgotten Bees'.

We meet on the third Thursday of the month between September and May and all meetings start at 7.45pm in St John's Church Room.

# Waterbeach Fun Dog Show

*"We loved it!"*

*"What a wonderful show. It was amazing to see everyone with their pawsome buddies and how well the show rings were run"*

*"The volunteers and stall holders made the day so special for our family and we are proud as punch of our dog"*

*"Smiles all round"*

*"Friendly people, beautiful dogs and the rosettes, prizes and trophies are outstanding"*

*"Never been to a dog show before, our dogs and children loved it and it was so well organised, it really was about fun and dogs. The food stalls were delicious too. All for good causes as well. Roll on next year!"*

This year's show raised £650! which has been split between Waterbeach Guides, Therapy Dogs Nationwide and Woodgreen Animal Shelter.

Heron's' Preschool provided a great array of delicious cakes and a tombola, to raise money for their growing community facilities. There were only a few crumbs left!

People brought their fun and generosity, whether they came to enjoy the day with a furry friend or not. It was clear to see we have many much-loved waggy tails and much community spirit in Waterbeach.

Most dogs went home with a ribbon and/or prize and 16 trophies are now proudly displayed in new homes. A pleasure to see so many dogs enjoying time together.



Winner Novice Best in Show:  
Albert, owned by Emily Blood



Winner Best Novice Movement:  
Molly, owned by Becca Windsor-Hayden



Winner Experienced Handler Best in Show:  
Floyd, owned by Fay Fitch

Photo by Theresa Dower of TND Photography

Young and nervous doggies joined in at their own pace....Clever tricksters entertained....Golden oldies showed their wise and fun-loving ways.....many beautiful breed varieties. Wonderful to see so many owners who care greatly for their four-legged friends. There are clearly some very talented, handsome,

much adored paws, in the village and beyond.

Some people made use of the outing to enjoy a good picnic with friends and some made the most of the delicious hog roast and ice cream stalls. Many people enjoyed Herons' Preschool's homemade cakes and the small talented and dedicated local craft and pet business stalls. Woodgreen provided a have-a-go dog agility zone, which was very popular.

Thank you to everyone who came along to make the show a success for the show beneficiaries and enormous thanks to the many local talented and dedicated small businesses and stall holders for supporting the show, without whose kind generosity we would not be able to run the show each year. We are incredibly grateful.

Lastly but by no means least, in fact quite the opposite, thank you to all the doggies, who brought their two-legged families out, for a brilliant day out with us that was all about them.

Waterbeach Fun Dog Show will be back again and next year is our 10<sup>th</sup> anniversary! Estimated: Sunday 14<sup>th</sup> September 2025

Keep your *Paws at the Ready* and an eye on the Facebook page (Waterbeach Fun Dog Show) and Beach News for further details! *Jude*(Show Organiser)

## Cam Washes

If you have walked along the west bank of the River Cam, north of Bottisham Lock, after a few miles you'll pass the Cam Washes. It is 169 hectares registered as a Site of Special Scientific Interest (SSSI) because of its important bird fauna, particularly of breeding and wintering waterbirds.

In 2005 the British Trust for Ornithology carried out a survey and recorded 11 species of wader including oystercatcher, avocet, snipe, lapwing and redshank using the site for breeding. Many of these are threatened birds. The report concluded with "The future for the ornithological interest of the site, however, is likely to be highly dependent on grazing and flooding, which if managed can provide beneficial foraging habitat for both breeding and wintering waterbirds." Sadly, much of the site has not been managed as it should have should been and hence much of it no longer floods. It has been left to dry out due to insufficient dredging by the landowner and is no longer a suitable habitat for these types of birds. Natural England has accepted that the site now needs remediation due to the neglect. However, it has failed to act, as is its statutory duty. We have been pursuing this with Natural England for around 18 months but no action has been taken.

We're launching a petition urging Natural England to take action and fulfil its statutory duty. If you are interested in seeing this important wildlife site returned to being a haven for wild birds, please sign the petition which we'll be taking to the head of Natural England.

Type this web address <https://chnng.it/54xhspf2XX>  
or use the QR code. *Authors: Paul Bearpark and Joe McWilliams*



# Foodbank

Waterbeach Distribution Centre (part of Ely Foodbank)

People need food banks when they don't have enough money and face impossible decisions – whether to put food on the table or pay for heating, whether it's possible to go without toiletries like shampoo, toilet roll or period products. Hunger in the UK isn't really about food. It's about people not having enough money for the essentials.

Trussell exists so that everyone in the UK can be free from hunger. They work to ensure no one needs a food bank to survive. Until that happens, they provide emergency food and practical support for people left without enough money to live on.

Waterbeach Distribution are part of Trussell and hold sessions at the Baptist Chapel every Thursday between 11.00 and 12.00. If you, or anyone you know need support from the Foodbank, please call 01353 468626 or email [info@ely.foodbank.org.uk](mailto:info@ely.foodbank.org.uk)

We are so grateful for the wonderful support we receive from the local community and Harvest time was no exception! A huge 'Thank you' to the congregations of St John's and the Salvation Army who delivered boxes of donations, to Waterbeach Community Primary School who needed two car journeys to deliver their gifts, to Herons' Preschool and the Footsteps and Praise and Play families at St John's, to Wates Construction and to Waterbeach Community Playgroup, who carried up their donations and stayed for a visit to find out more about the work of the Foodbank and how this complimented their learning about giving and helping others.



*Caroline and Chantal delivering one of the carloads of gifts from Waterbeach Community Primary School.*

In addition to these generous Harvest gifts, we are continually grateful to all those who regularly pop into the chapel to drop off food, toiletries, pet food and home grown produce. All three of our village churches have collection boxes as does the Co-op and One Stop, and we would like to thank everyone who supports these donation points.

We all know what an expensive time of year Christmas can be and ask you to remember those in our own community who will find this a particularly challenging time financially.

# Arthur Rank Hospice Charity

Arthur Rank Hospice Charity supports people in Cambridgeshire living with an advanced serious illness or other life-limiting condition and those who need end-of-life care. Our 'Outstanding' services are provided free of charge to patients and their families. Our aim being to provide the highest quality care, helping people to make every moment count.

Around 3,600 patients each year are cared for at the Hospice in Cambridge, the Alan Hudson Centre in Wisbech and in patients' own homes via the Arthur Rank Community Team. This care supports people to improve their quality of life and fulfil their end of their life choices.

Alongside the care provided by the Inpatient Unit, Living Well services and Hospice at Home teams, patients can access: patient and family support (including counselling, bereavement, psychological and spiritual support); Lymphoedema care; physiotherapy, occupational, complementary and creative therapies; medical and pain outpatient clinics; Transitioning Young People Services, Caring Communities



and advice from the Clinical Nurse Specialists within the Specialist Palliative Care Home Team or via the Palliative Care Hub (111, Palliative and End of Life Care option).

A family member of a patient cared for by our Inpatient Unit recently shared the following message: "We wanted to thank you all for making Dad's last week of life as good and comfortable as it could be. It meant so much to us as a family to know he was being so well cared for 24 hours a day. Each and every staff member we saw was so helpful, compassionate and empathetic, not just to Dad, but to each and everyone of us too. You are all truly amazing!" People are our greatest asset and make Arthur Rank Hospice Charity vibrant, welcoming and engaging. Around 250 colleagues, over 600 active volunteers and thousands of supporters, are known collectively and fondly as 'Team Arthur'.

It will cost over £13 million to run our services in 2024/2025. Contracted services from the NHS are budgeted at £7.9 million. With the help of our community, we need to raise a further £5.1 million through donations, fundraising activities, retail sales, the Education and Conference Centre and Bistro. If we fail to meet this target the difference will, reluctantly, have to be taken from our limited reserves. Sustaining services for people in our

community is our focus and therefore we are extremely grateful to everyone who demonstrates their dedication, commitment and generosity and helps protect our reserves for the future.

We welcome visitors to the Hospice. If you have not been before and would like to, we hold quarterly open days. For further information, please visit [arhc.org.uk](http://arhc.org.uk)

## Tithe Barn, Landbeach

***It's 'all go' at the tithe barn at Landbeach - come and volunteer with us.***

It's been a busy summer at the tithe barn at Landbeach. As it becomes better known the barn is in increasing demand as a venue as well as being a fascinating destination in its own right.

This year, aside from essential indoor and outdoor maintenance, the barn has hosted numerous public events from live music, theatre, country markets, participating in the national Heritage Open Day and life-drawing to a variety of private events including weddings, visits by local groups and societies, hosting activities for local scout groups and child nurseries.



*Carols at the Tithe Barn*

All this activity is great news as it helps the Tithe Barn Trust work towards achieving its mission of 'ensuring the long-term survival of the rare and ancient Tithe Barn, by breathing new life into the site, for everyone to enjoy'. This is made possible by our band of dedicated volunteers who look after the barn, help arrange public events and host the private ones.

We are always on the look-out for more people to join our friendly band of volunteers of all ages. What will you get in return for your involvement? Well, making new friends, working in an amazing place and knowing that you're helping a great cause are three great reasons to get volunteering. As a member of the team you can commit to as much or as little as you wish from just helping out occasionally or undertaking a regular task. Whatever level of support you wish to give, we'll be really pleased to hear from you.

In particular, we are looking for extra support and experience in two aspects of our activities. The first is to help us further develop and manage our range of events and the second is to help us improve our fundraising activities.

To find out more about these or any aspect of volunteering with us you can complete a short form on-line at [Volunteer with us!](#) or simply email us on [tithebarntrust@gmail.com](mailto:tithebarntrust@gmail.com)

# Fen Edge Twinning Association

The highlight of our activities is always the annual exchange visit with our partners in Avrille. This year, on the evening of November 1st we received 32 French "twinners" at Rampton Village Hall where they were welcomed by our chairman and by representatives from Cottenham and Willingham Parish Councils and, of course, by their hosts for the weekend. Drinks and nibbles accompanied the formalities before the hosts all took their guests to freshen up after their journey and enjoy their evening meal together.

On Saturday we visited Bletchley Park for the day before going to Landbeach Village Hall for an evening Social with an "Indoor Picnic" and a fun picture quiz. The consensus was that it had been a very good day - if a little tiring.



Sunday was more relaxed, with hosts entertaining their guests independently. Most people attended a special showing of "Chariots of Fire" (with French subtitles) at the Cottenham Community Centre and then small groups (two or three hosts and their guests) formed for a very sociable evening meal.

The French had to leave early on Monday morning to be sure of catching their Channel Crossing, so fond farewells were shorter than usual. Everyone agreed that it had been fun spending time with their "strange" foreign friends, and we are all looking forward to our return visit in the Spring.

We are always keen to welcome new members, if you think this is the sort of thing you could enjoy, please email [fenedgetwinning@gmail.com](mailto:fenedgetwinning@gmail.com) for more information.

## Waterbeach Community Association Carols on Waterbeach Green



**Christmas Eve  
6.30pm**

**Please remember to bring your  
lights, lanterns and torches**



A copy of the carol sheet can be downloaded in advance from [www.waterbeach.org](http://www.waterbeach.org)

# Memories from Landbeach

The article below about memories of a boy living in Landbeach was first published in Beach News No.19 in March 1975.

## Landbeach about 1900

As a boy living at Goosehall Farm, Landbeach for about six years, I can recall many people and happenings. The roadsides from Waterbeach to Chittering were grazed by cattle and flocks of sheep. Mr Johnnie Plumb and his dog Joe were often seen walking there and Tinpon Bowers, a tall upright man with his large hat and friendly donkey. I used to gather scores of lovely hyacinths and plenty of mushrooms along those fields. Will Bowers was the roadman who tended the road from Landbeach to the Stretham boundary sweeping all the while and filling up the holes with stones and white stuff called clunch. There was little Billy Mancer, in the summer he would have the cows out to grass and mornings and evenings he would push a milk churn on wheels and milk the cows, taking it back to Landbeach. In the droves nearby we boys would go birding, catching blackbirds in nets and sending them to London for which we got threepence a bird. The gypsies would make their homes in the droves and after meeting them I would fetch a half gallon of beer every other night for my father and step-mother as there was no law against serving children in those days. I remember Grannie Sanderson and Minnie Ostler who served me beer at 2d a pint. There was Johnnie Diver, the Church Sexton, the old pump and pond nearby where they used to keep any stray sheep. The Rev. Stevens was the vicar, a lovely white whiskered gentleman who helped me join the Cambridge Benefit Club. For 1s4½d a month I was promised a pension at 65 years. Remember the old Blacksmiths shop on the site where the Village Hall now stands? Dan Short and William Burrows were the Blacksmiths then. There were many of the old Landbeach families, the Ballards, Spladings, Easys, Len Bull, the Roses - a real cricket family there and Teddy Bull, the baker. I used to sell bunches of cress at 1d a bunch and Mr Handley called Taunt sold onion seed for 4½d an ounce. I also remember Mr Pont being struck and killed by lightning. Can many Of Landbeach people remember the Baptist Minister, Rev. Spanton? Not forgetting Mr Charles Piggott, a great chapel man and also corn merchant and the two Ben Coopers who worked in the mill. I remember the old self binder on a Sunday at Landbeach – what a wonderful sight after the reaping machine and the scythe. There is so much to remember of the old days.

*Benny Burton*





# Concrete Rose Collective



## **Could you host a young person in your spare room?**

Sarah\*, 17, was living alone in a three-bedroom house after unexpectedly losing her mum. With the property belonging to the council and the pressures of living alone and studying becoming too much she was desperately in need of a safe, supportive place to call home. Having moved in with hosts in April, Sarah remarkably passed her A-levels and in September, started a university degree.

Sarah is one of three young people moving to university from our Supported Lodgings scheme, and all our young people are in full-time education or work.

*“Ever since I have moved in with my hosts, everything began to get easier. I finally had time to study in peace and work towards my goals” - “Natalie”*

This shows the difference a safe, stable home environment can make but, with an ever-increasing waiting list, we’re desperately need more hosts.

**Could you help?** - We’re looking for individuals, couples and families with a spare room, who can support a young person as they transition to independence after leaving care or difficult family circumstances.

**What is supported lodgings?** - Supported lodgings simply means offering a spare room to a young adult for a set period (usually 3-24 months) to allow them to develop their independent living skills and create the foundations for their future. It’s a chance to really make a difference.

Our Supported Lodgings package offers:

- Training
- Wraparound support
- A weekly payment
- Careful matching of host and young person

It’s not fostering and sits comfortably alongside a full-time job.

**How can you help?** - Could you:

- Put up a poster at work or in your community?
- Send information around to your colleagues?
- Consider becoming a host?

## **Find out more**

- Watch our videos: <https://tinyurl.com/bdd27bnw>
- Hear from our founder: <https://www.youtube.com/watch?v=8T1bv10gP90>
- Sign-up to our newsletter: <https://concreterose.co.uk/>

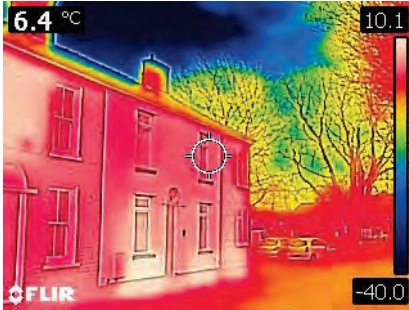


## **Get in touch!**

Please contact Mike Farrington [mike@concreterose.co.uk](mailto:mike@concreterose.co.uk) T:07881 926728

# Thermal Imaging for a Cosier Home

Cambridge Carbon Footprint are once again delighted to offer to residents, and organizations, across Cambridge and South Cambs the opportunity to borrow and learn how to use a thermal imaging camera for free, to help create cozier and more efficient homes.



Learn how to interpret thermal images, to identify draughts, gaps in insulation, heating problems, etc. Knowing where your home is leaving heat is great for deciding on home improvements, and making fixes, both for homeowners and renters. In their last borrowing period between November '23 and April '24 they successfully trained over 600 individuals

and made over 400 thermal camera loans to residents across our region.

*“Really useful tool for assessing the home’s heat loss and for planning improvements” - Borrower*

They also encourage individuals or organisations to undertake training in order to survey multiple homes. In 2024 volunteers from communities across Cambridgeshire undertook surveys of 113 neighbouring homes and community buildings.

## Training Sessions:

Four **free** training sessions will take place online from 7:30-9:00 pm on: Wed 11 Dec, Tue 14 Jan, Wed 12 Feb

## Camera Borrowing:

We only lend cameras to people who have attended the training. Bookings for cameras will open on 5th Nov, after the training session. **Free** Loans of cameras will start on Fri 8th November, through to April: Each loan: Fri pm to Mon am, or Mon pm to Fri am, from 14 volunteer camera hosts around South Cambs and Cambridge City.



*An excellent scheme - very much appreciate the opportunity to borrow the camera -thank you!*

For more information contact:

Fran Sutton: [fran@cambridgecarbonfootprint.org](mailto:fran@cambridgecarbonfootprint.org) or 07713 841391

## WATERBEACH COMMUNITY ASSOCIATION MEMBERS

1 <sup>ST</sup> WATERBEACH BROWNIES	Tiffany Langton - <a href="mailto:1stwaterbeachbrownies@gmail.com">1stwaterbeachbrownies@gmail.com</a>
2 <sup>ND</sup> WATERBEACH BROWNIES	Penny Clay - <a href="mailto:2ndwaterbeachbrownies@gmail.com">2ndwaterbeachbrownies@gmail.com</a>
1 <sup>ST</sup> WATERBEACH GUIDES	Louise Campbell - <a href="mailto:1stwaterbeachguides@gmail.com">1stwaterbeachguides@gmail.com</a>
1 <sup>ST</sup> WATERBEACH RAINBOWS	June Stephen - 07956 949964
32 <sup>ND</sup> CAMBRIDGE (WATERBEACH) SCOUT GROUP	William Moon - 07879 626682
BEACH BALLS - WATERBEACH JUGGLING CLUB	Felix Clay - 07723 329288
BEACH BELLRINGERS	Barbara Le Gallez - 01223 860283
BEACH SOCIAL CLUB	Kate Donovan - 01223 860033
CAM SAILING CLUB	Anna Cole/Nick Heath - <a href="mailto:secretary@camsailingclub.org.uk">secretary@camsailingclub.org.uk</a>
COMMUNITY ASSOCIATION CHAIRPERSON	Alasdair Pentland - 07751 786040
COMMUNITY ASSOCIATION SECRETARY	Pam Clack - 07367 123110
FRIENDS OF ALL SAINTS' CHURCH, LANDBEACH (FOALS)	John Buckley - 01223 861836
FRIENDS OF WORTS MEADOW LANDBEACH	Frances Dipper - 01223 861836
HAPPY FOLKS CLUB	Terri Spencer - 01223 666051
HERONS' PRESCHOOL	Angela Impey - 01223 863245
ST. JOHN'S CHURCH	Rev. Paul Butler - 07903 904599
WASPS (WATERBEACH AFTER SCHOOL PLAY SCHEME)	Sarah Heil - 07858 975397
WATERBEACH & DISTRICT GARDENING CLUB	Jerry Cooper - 01223 574050
WATERBEACH BAPTIST CHAPEL	Angela Ensell - 01223 862494
WATERBEACH BOWLS CLUB	William Clough - 01223 861386
WATERBEACH BRASS	David Pell - 07703 352080
WATERBEACH COLTS FC	Paul Cuddon - <a href="mailto:wcfc.chair@gmail.com">wcfc.chair@gmail.com</a>
WATERBEACH COMMUNITY MARKET	Gaynor Clarke - 07824 399240
WATERBEACH COMMUNITY PLAYGROUP	Fiona Thomas - 01223 440769
WATERBEACH COMMUNITY PRIMARY SCHOOL P.T.A	Jane Fowler - <a href="mailto:waterbeachpta@gmail.com">waterbeachpta@gmail.com</a>
WATERBEACH CRICKET CLUB	Alasdair Pentland - 07751 786040
WATERBEACH DAY CENTRE FOR THE ELDERLY	Shirley Hayhoe - 07767 793505
WATERBEACH INDEPENDENT LENDING LIBRARY (WILL)	Sheila Burke - 01223 864177
WATERBEACH MILITARY HERITAGE MUSEUM	Adrian Wright - 01223 861846
WATERBEACH PARISH COUNCIL	Parish Clerk - 01223 441338
WATERBEACH SALVATION ARMY	Ian Ellwood - 07885 659860
WATERBEACH THEATRE COMPANY	Julie Petrucci - 01223 880023
WATERBEACH VILLAGE SOCIETY	Mike Lynch - 01223 863946
WATERBEACH WI	Viv Cooper - 01223 574050
WAY YOUTH CLUB (WATERBEACH & LANDBEACH ACTION FOR YOUTH)	Caroline Ward - 07749 738870
WOODLAND TRUST - COW HOLLOW WOOD	Adrian Wright - 01223 861846

### Other useful numbers:

BEACHES COMMUNITY CAR SERVICE	07807 875878
COMMUNITY WARDEN	07977 219403
DISTRICT COUNCILLOR	Paul Bearpark - 07824 709153 / Judith Rippeth - 07956 528223
DOCTORS SURGERY – WATERBEACH	01223 860387
LANDBEACH VILLAGE HALL	<a href="mailto:villagehall@landbeachvillage.co.uk">villagehall@landbeachvillage.co.uk</a> - 07942 361194
WATERBEACH PARISH COUNCIL	Parish Clerk - 01223 441338
WATERBEACH SCHOOL	01223 718988
WATERBEACH CHARITIES	Pam Gooding - 01223 861003
WATERBEACH SQUASH CLUB	Iain Smith - 07882 770415

# Waterbeach

The former barracks and airfield at Waterbeach offer a range of community facilities for local groups including:

- Sports Hall
- Studio
- Tennis Courts
- Squash Courts
- Community Rooms

For more information and to book please contact:

[hello@waterbeachwb.co.uk](mailto:hello@waterbeachwb.co.uk)



- 1 Sustainable Travel Hub
- 2 Space for imaginative play
- 3 The Causeway
- 4 Deneja Primary Academy
- 5 Wild Woods Play Area
- 6 Allotments (coming in 2026)
- 7 Waterbeach Gardens
- 8 Lake
- 9 Community centre, café and interim health centre (coming in 2024)
- 10 1.2km lake loop
- 11 Memorial Park
- 12 Sports Hall & The Playground assault course
- 13 Mere Way cycle route
- 14 Waterbeach Military Heritage Museum
- 15 Squash courts
- 16 Tillage Way cycle route
- 17 Waterbeach Causeway

— Walking and cycling routes

## Find out more

Urban&Civic are keen to work with the community to keep you informed and give you the opportunity to shape the development of this special place. If you, or your local group would like to find out more, meet us for a coffee and have a tour of the site contact:

[hello@waterbeachwb.co.uk](mailto:hello@waterbeachwb.co.uk)



# GIFT VOUCHERS

A PERFECT GIFT FOR FAMILY OR FRIENDS



TRAVEL BACK TO THE GOLDEN AGE  
OF LUXURY RAIL TRAVEL AND  
INDULGE IN AN AFTERNOON TEA

01954 233279 [www.carriagesofcambridge.co.uk](http://www.carriagesofcambridge.co.uk)

Carriages of Cambridge, Capability Barns, Huntingdon Road, Fen Drayton, CB24 4SD   